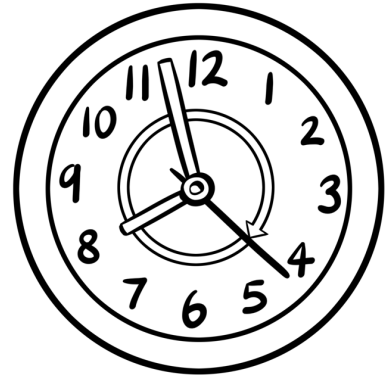
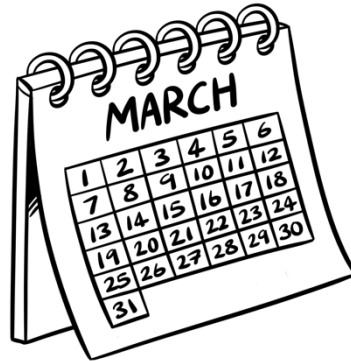
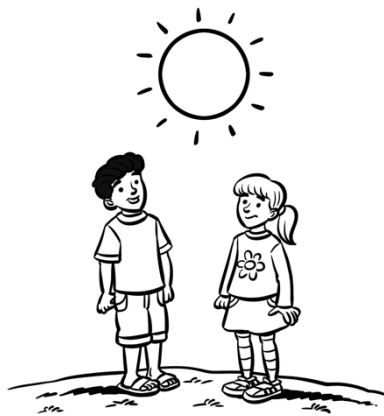


# Unit 7 Test

Name: \_\_\_\_\_

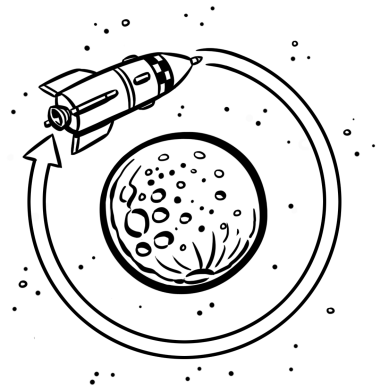
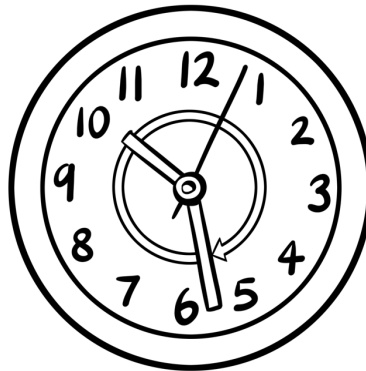
## 1 Look, read, and write the words. / 6



1 At \_\_\_\_\_ the sun is directly above us.

2 This \_\_\_\_\_ has 31 days.

3 A \_\_\_\_\_ has 60 seconds.



4 This \_\_\_\_\_ I'll turn nine!

5 An \_\_\_\_\_ has 60 minutes.

6 The rocket is in \_\_\_\_\_ around the moon.

## 2 Match the two parts of the sentence. / 7

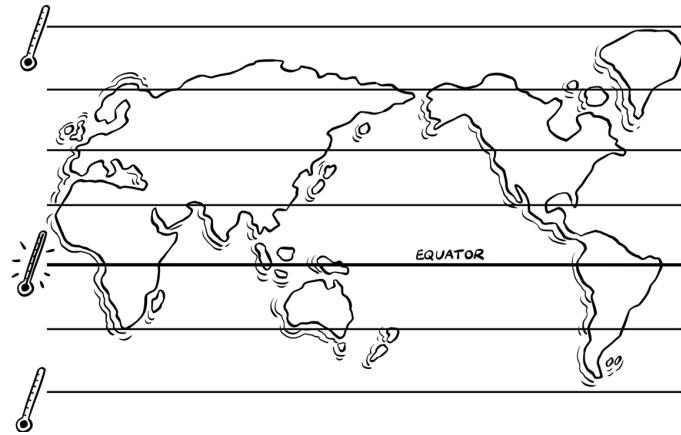
- 1 In two hours,
- 2 It will rain tomorrow,
- 3 It won't be dark
- 4 I'll be thirteen
- 5 Next month it
- 6 In summer,
- 7 Next year I won't

- a will be March.
- b in three years.
- c it will be 6 o'clock.
- d so take your umbrella.
- e until 8 o'clock.
- f study French.
- g we'll go on vacation.

**3 Read, look at the diagram, and answer the questions.** / 6

*The Equator and Latitude*

When you look at the Earth there is an imaginary line around the middle. It is called the Equator. It is halfway between the North and the South Pole. Latitude lines on maps measure the distance between different places in the world and the Equator. These lines match different climates. We describe a place's latitude as degrees north or south. The North Pole is 90 degrees north, the South Pole is 90 degrees south, and the Equator is 0 degrees.



- 1 Is it hot or cold near the Equator? \_\_\_\_\_
- 2 What is the latitude at the Equator? \_\_\_\_\_
- 3 What is the latitude at the North Pole? \_\_\_\_\_
- 4 What is the latitude at the South Pole? \_\_\_\_\_
- 5 What do latitude lines measure? \_\_\_\_\_
- 6 Is your country near the Equator? \_\_\_\_\_

**4 Write about the climate and temperature where you live.**  
**Use the ideas below to help you.** / 6

- seasons • when is it hot and cold?
- clothes • nature • favorite time of year

---

---

---

---

---

---